

The CareFusion Learning Portal

A new web-based course is now available on the CareFusion Learning Portal for customers using the Infant Flow[®] SiPAP System.

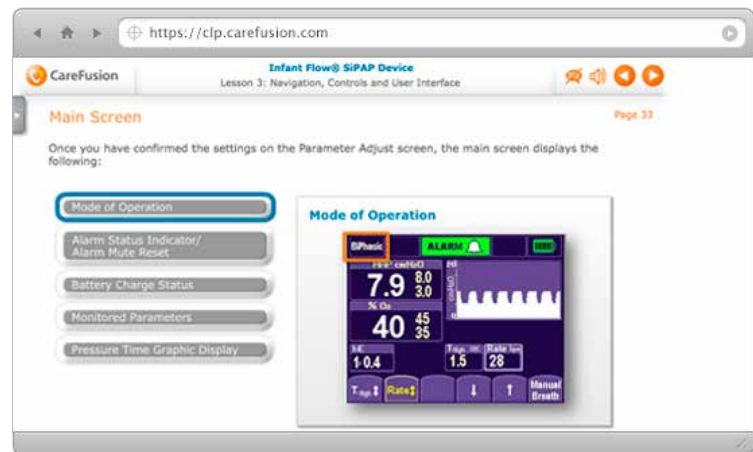
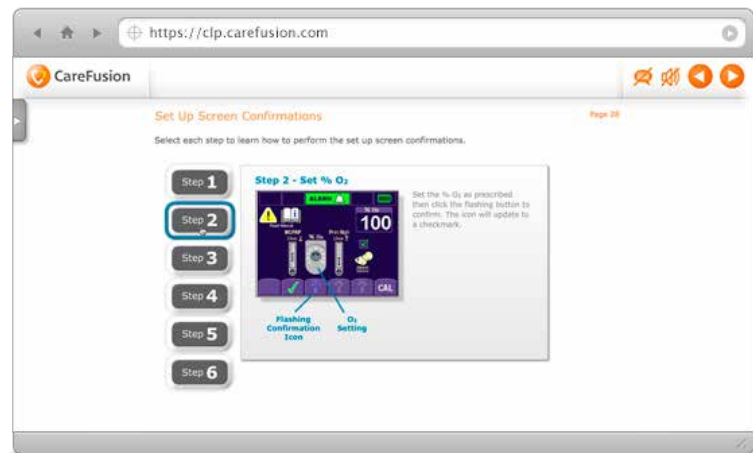
Access the CareFusion Learning Portal at:
<https://clp.carefusion.com>

The course number and title is:
CLP1221: Infant Flow SiPAP system

This interactive course guides clinicians on setting up, using and troubleshooting the Infant Flow SiPAP System and its unique clinical features.

Follow these steps to get started:

1. Open <https://clp.carefusion.com>.
2. Select **Register**.
3. Enter your contact information, and select a username and password.
4. Select **Submit**, and watch for an email from **CustomerLearning@CareFusion.com**.
5. Click the link to activate your account and then log in with the username and password you selected in step 3.
6. Click the TRAINING CATALOG link and search for your selected course number and title.



carefusion.com

